

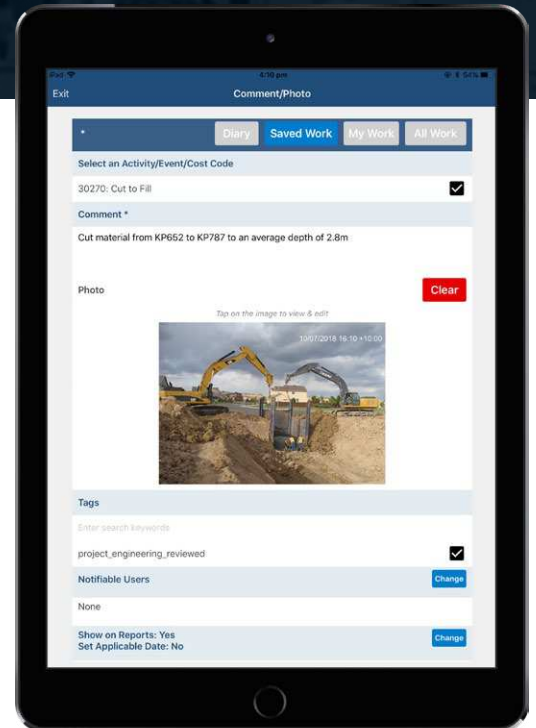


## Photo management

### Central, linked, rich photo assets

**Projects traditionally gather photos from multiple sources, requiring effort to extract them for central storage.** This creates double-handling for project teams as they manually search for, and use, images. Ultimately, this limits their value and impacts the critical role of photos as evidence for client reports, claims, subcontractor management, progress tracking on large sites and more. Envision enables a disciplined approach to project photos. Once taken, they are linked immediately to activities, events or tasks, creating traceability and searchability for the life of a project. This turns photos into readily-usable assets for reports and other key project documents.

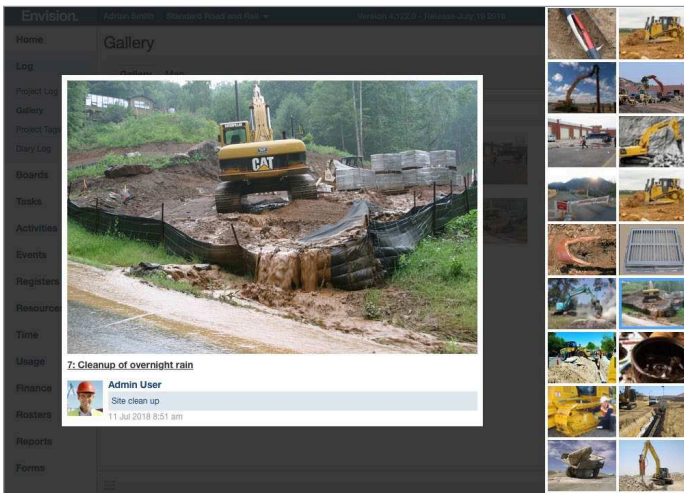
Rapidly capture, caption, geolocate, tag and watermark project photos



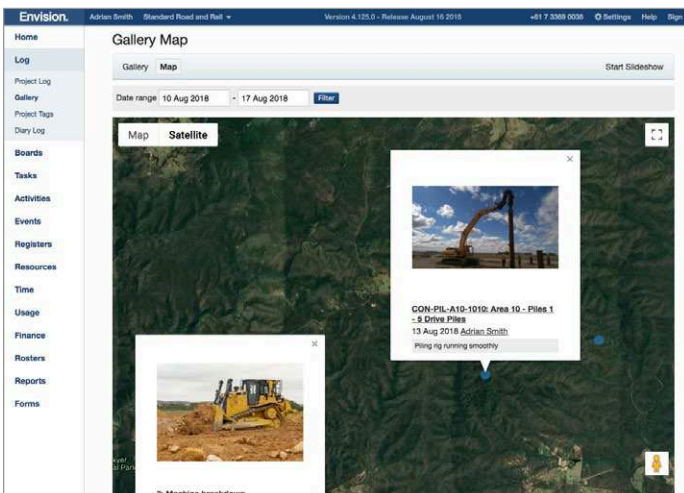
- ✓ Enable easy, linked photo capture and use within daily project life
- ✓ Unlock the value of photo assets by adding notes and mark-ups
- ✓ Support improved understanding by enabling team comments on photos
- ✓ Generate automatic watermarks with GPS and time data for indisputable records
- ✓ Improve searching and grouping via tags for efficient photo reuse
- ✓ Improve reporting quality and speed with automatic photo integration
- ✓ Search photos by location on an interactive map



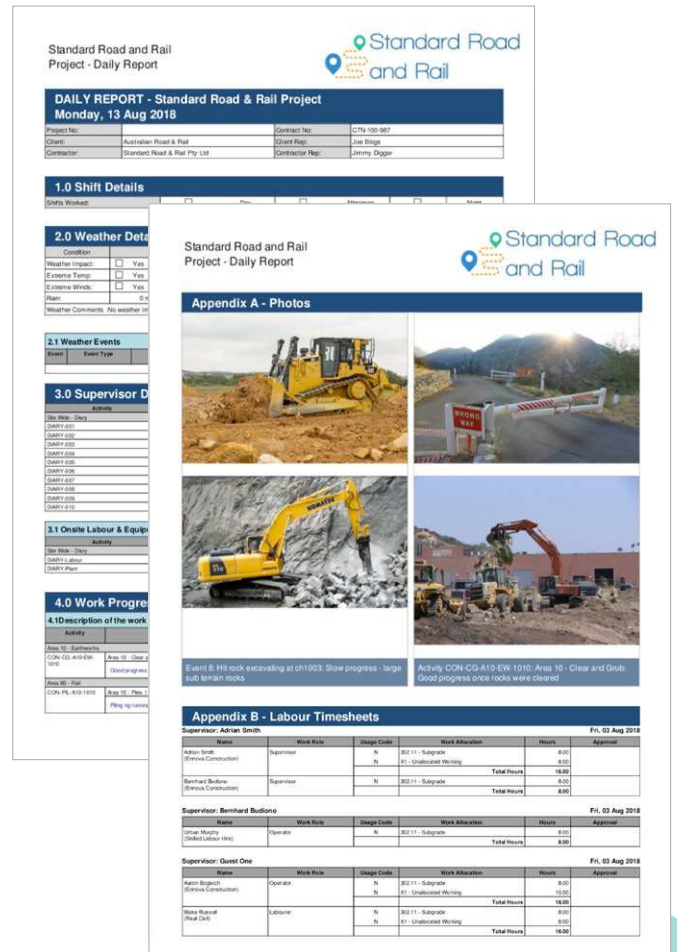
Search for, and filter, photos as a gallery and as tagged posts



Generate maps showing photo locations using GPS data



Automatically embed photos into reports or support easy integration



Enrich project reports by automatically including photos via Envision's daily diaries and reports solution.

For more information on Envision's photo management solution, please talk with our team today on +61 7 3369 0038.